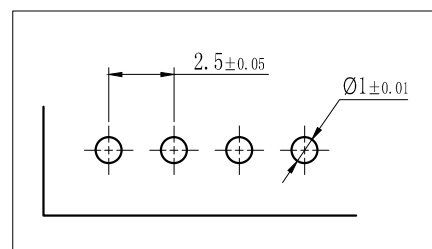
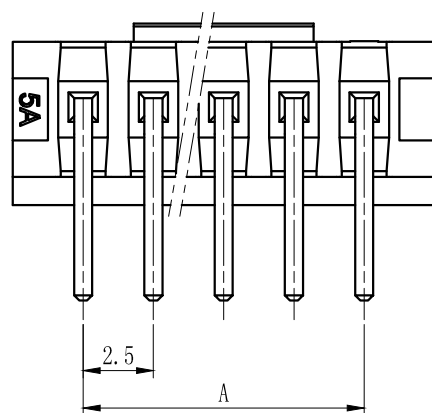
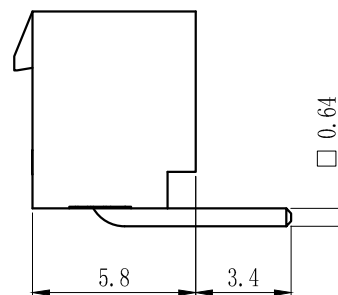
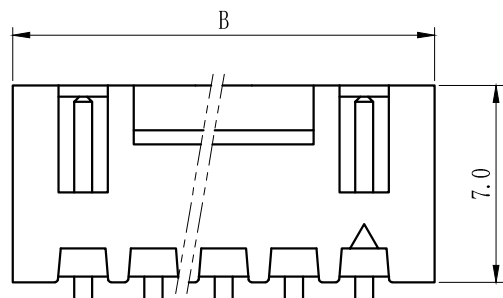


Specifications:  
 Operating Voltage: 250V AC/DC  
 Current Rating: 3A AC/DC  
 Withstand Voltage: 1000V AC/Minute  
 Contact Resistance:  $\leq 30\text{m}\Omega$   
 Insulation resistance:  $\geq 1000\text{m}\Omega$   
 Operating Temperature:  $-25^{\circ}\text{C} \sim +85^{\circ}\text{C}$



P. C. B LAYOUT

P数	尺寸 (mm)	
	A	B
2	2.50	7.50
3	5.00	10.00
4	7.50	12.50
5	10.00	15.00
6	12.50	17.50
7	15.00	20.00
8	17.50	22.50
9	20.00	25.00
10	22.50	27.50
11	25.00	30.00
12	27.50	32.50
13	30.00	35.00
14	32.50	37.50
15	35.00	40.00
16	37.50	42.50

一般公差 TOLERANCES X. $\pm 0.40$ .XX $\pm 0.20$ .X $\pm 0.30$ .XXX $\pm 0.10$ ANGLES $\pm 2^{\circ}$		<b>深圳市宏利电子有限公司</b> <b>Shenzhen Holy Electronic Co.,Ltd</b>	
检验尺寸标示 SYMBOLS $\odot$ $\ominus$ INDICATE CLASSIFICATION DIMENSION $\odot$ MARK IS CRITICAL DIM. $\ominus$ MARK IS MAJOR DIM.	工程 图号 XHB25-nAW	制图 (DR) *10/03/22 审核 (CHKD)	
表面处理 (FINISH)	品名 XHB2.5-nAW 弯针	核准 (APPD) Rigo Lu	
修订 REV	修改摘要 REVISION DESCRIPTION	日期 DATE	签名 SIGNATURE
		比例 (SCALE) 1:1	单位 (UNITS) mm
			张数 (SHEET) 1 OF 1
			SIZE A4
			REV 0

△	-	-	-
修订 REV	修改摘要 REVISION DESCRIPTION	日期 DATE	签名 SIGNATURE